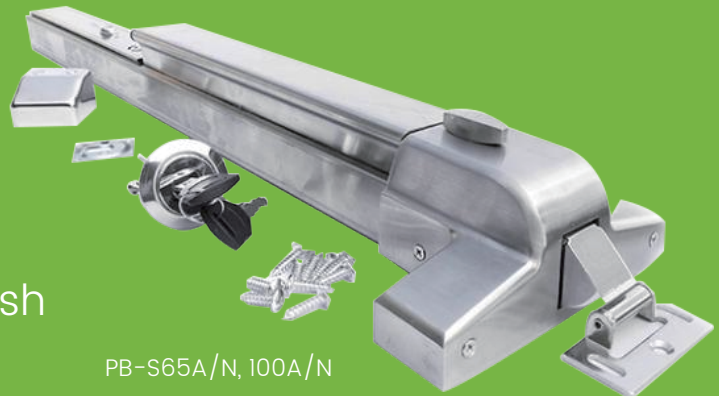


Emergency Exit Electronic Push Rod (304 Stainless Steel)



PB-S65A/N, 100A/N

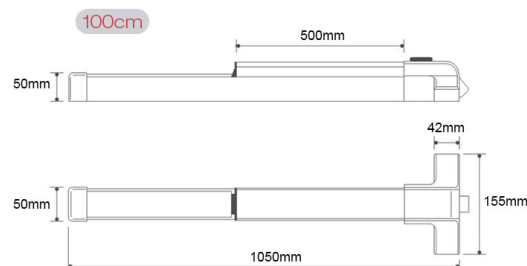
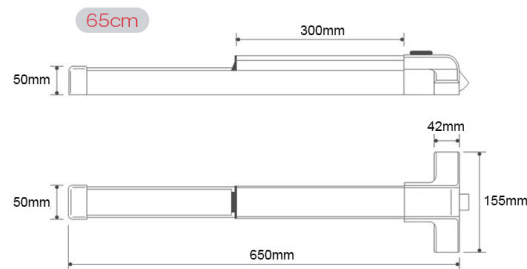
Here are the available models for your choose, Available for 1000mm and 650mm,

Model No.:	Photo	Material	Lenght /CM	Alarm output
PB-BF65A:		Baking Finish	65cm	YES
PB-BF65N:				NO
PB-BF100A:				YES
PB-BF100N:				NO
PB-S65A:		Stainless Steel 304	65cm	YES
PB-S65N:				NO
PB-S100A:				YES
PB-S100N:				NO

Specifications

- > Fire-proof ability
- > Fits doors 30'-36' wide
- > Panic devise with dogging feature
- > Solid cored spring bolt
- > Normally open/close
- > Corrosion resistance
- > Able for exterior opening with keys
- > Reversible, non-hand opening
- > Competent for crowded public places
- > Prevents unauthorized access
- > Rounded edges avoiding accidental injury

Dimensions

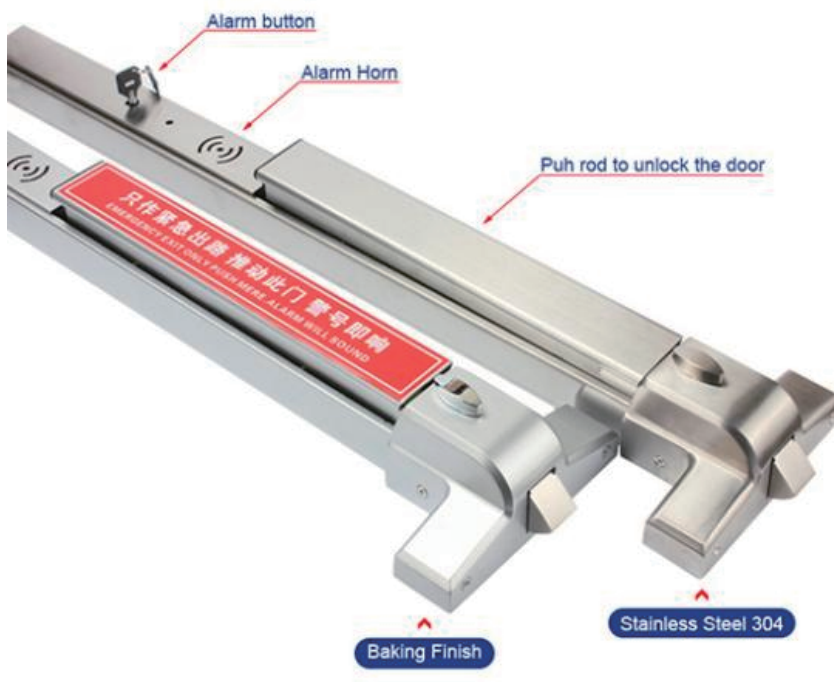


Product Feature

- > Suitable for both wood or metal door applications (not used for glass doors).
- > Easy Installation.
- > Excellent Quality Panic Hardware.
- > Strike Plate, Dogging Key and Screws Included
- > Able to resist the strong external pull. Solid cored spring bolt, resisting sawing and destruction. Trustworthy guardian for life and property security.
- > Suitable for controlling visitor flow rate, preventing unauthorized access and theft.
- > Meets legal demands for emergency exit devices in buildings.
- > Doors will open faster based on convenient non-hand opening with a large compression area.
- > Doors will open with a lighter force of $\leq 70\text{N}$.
- > Rounded edges with standard curving, preventing accidental injuries in an emergency.
- > High-resistance to corrosion, passes long-time tests without damaged parts, ensuring its ability to fit in all kinds of places.

Package

Package Include:	1 x Door Push Bar Exit Lock
	Screws for Installation
	1 x External Lever
	3 x Lever Keys
	1 x Strike
	1 x End Cap
	1 x User Manual



S4A Industrial Co., Limited

Address: The 2nd floor, Jinmin'an Industrial Zone, #529, Bulong Rd.
Bantian St. Longgang Dist. Shenzhen, PRC. CN 518131



Tel: +86 755 29450011

www.s4a-access.com